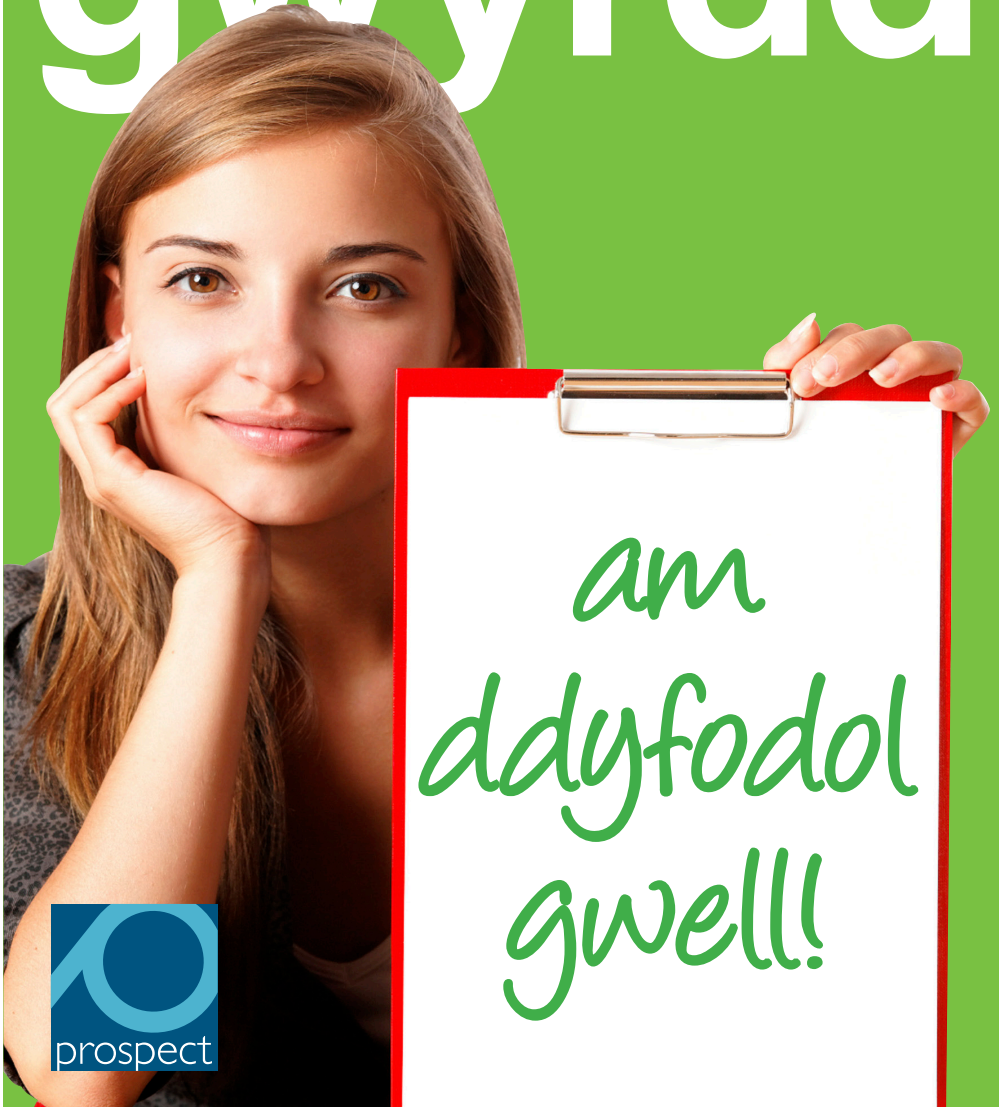


gweithleoedd gwyrd



amgylcheddol • economaidd • synnwyr cyffredin

Mae Prospect wedi bod ynghlwm wrth fentrau gweithleoedd gwyrdd ar draws holl sectorau'r undeb. Mae ein profiad wedi bod pan fydd cyflogwyr ac undebau'n cydweithio, fe all sefydliadau arbed arian, arbed ynni a lleihau gwastraff.

Mae gwella perfformiad amgylcheddol yn y gwaith yn allweddol i ddelio â newid yn yr hinsawdd. Busnesau sy'n gyfrifol am 30% o holl allyriadau nwy tŷ gwyrdr, o gymharu â 26% o'r sector tai a 24% o drafndiaeth¹

Am wastraff²

Mae goleuo swyddfa dros nos yn gwastraffu digon o ynni i gynhesu dŵr ar gyfer 1,000 o baneidiau o de.

Bydd ffenestr arferol wedi'i gadael yn agored dros nos yn y gaeaf yn gwastraffu digon o ynni i yrru car bach dros 35 milltir.

Mae llungopiwr wedi'i adael ymlaen dros nos yn defnyddio digon o ynni i gynhyrchu dros 1,500 o gopiâu.

Mae gadael monitor cyfrifiadur ymlaen trwy'r nos yn gwastraffu digon o ynni i ficrodonio chwe phryd o fwyd.

Mae defnyddio bylbiau golau sy'n defnyddio ynni'n effeithlon yn arbed 80% o drydan.

Mae gostwng thermostat gwres canolog 1 gradd yn arbed 10% o gost.



Y rheswm mae newid yn yr hinsawdd yn fater i'r undeb

Gyda 6.5 miliwn o aelodau yn y DU, mae gan undebau rôl bwysig i'w chwarae drwy godi ymwybyddiaeth a chynnig cyngor am fentrau rheolaeth amgylcheddol yn y gwaith, yn y cartref ac yn y gymuned.

Er mwyn osgoi canlyniadau gwaethaf newid yn yr hinsawdd a dychwelyd i dwf o ansawdd uchel, rhaid i'r DU anelu am economi carbon isel. Fe fydd gan hyn effeithiau ar swyddi a sgiliau.

¹ Adran Ynni a Newid yn yr Hinsawdd, ffigyrau dros dro 2010

² Yr Ymddiriedolaeth Garbon a'r Swyddfa Dywydd

Mae yn barod yn rhy hwyr i osgoi rhai o ganlyniadau newid yn yr hinsawdd, ond gellir gweithredu i helpu i weithleoedd baratoi ar gyfer newidiadau, fel hafau mwy cynnes. Mae gorgyffyrddiadau clir gydag iechyd a diogelwch ble mae rolau'r undebau wedi ennill eu plwyf.

Mae canlyniadau gwaethaf a mwyaf enbyd newid yn yr hinsawdd i'w gweld yn barod yn y byd sy'n datblygu.

Fe allai cynnydd o 2 radd yn y tymheredd:

- ▶ Achosi i'r tywydd fod yn fwy newidiol, achosi digwyddiadau eithafol amlach a dwysach, a gadael yr arfordir yn ddiameddiffyn i ymchwyddiadau stormydd
- ▶ Rhoi rhwng 100 miliwn a 400 miliwn mwy o bobl mewn perygl o newyn
- ▶ Gweld 1-2 biliwn mwy o bobl yn wynebu prinder dŵr
- ▶ Arwain at golled barhaol o 4-5% o Gynnyrch Domestig Gros yn Affrig a De Asia
- ▶ Rhoi 20 i 30% o rywogaethau planhigion ac anifeiliaid mewn risg uwch o farw allan



Beth mae Prospect yn ei wneud?

Mae arolygon Prospect wedi dangos yn rheolaidd fod aelodau'n pryderu am yr amgylchedd ac eisiau i'r undeb weithredu. Rydym yn:

- ▶ datblygu swyddogion gwyrdd drwy drefnu cyrsiau cenedlaethol a hyfforddiant yn y canghennau – www.prospect.org.uk/education
- ▶ cydweithio â chyflogwyr i gael gwelliannau amgylcheddol yn y gweithle, er enghraifft gyda chwmnïau fel BT ac United Utilities, adrannau'r llywodraeth ac amgueddfeydd cenedlaethol³
- ▶ cynnig arweiniad ymarferol a sefydlu rhwydwaith amgylchedd www.prospect.org.uk/environment
- ▶ cydweithio â sefydliadau i fewnosod cynaliadwyedd yn arferion caffael, perthynas gyda chyflenwyr a chyfrifoldeb cymdeithasol corfforaethol – www.prospect.org.uk/international/ethicalprocurement
- ▶ cydweithio ag undebau eraill a'r TUC drwy Bwyllgor Cynghori Datblygu Cynaliadwy'r undebau Llafur y prif fforwm ymgynghori rhwng y llywodraeth a'r undebau llafur ar faterion datblygu cynaliadwy ac amgylcheddol).

Deg cam hawdd i gael gweithle gwyrddach

- ▶ Diffoddwch holl offer cyfrifiadurol, cyfarpar a pheiriannau pan nad ydynt yn cael eu defnyddio.
- ▶ Defnyddiwch y grisiau yn hytrach na'r lifft.
- ▶ Os ydy'ch gweithle'n rhy boeth, trowch y gwres i lawr yn hytrach nag agor ffenestr. Cydweithiwch â chynrychiolwyr yr undeb i wella gorboethi sy'n cael ei achosi gan offer neu awyriad sâl.
- ▶ Os yw'n rhy oer yn ystod y gaeaf, sicrhewch nad oes dim yn rhwystro'r rheiddiaduron, a gofynnwch i'ch cyflogwr i osod gwell ynysiad.
- ▶ Edrychwch i weld a yw'r goleuadau ymlaen yn ddiangen ynghanol y dydd – mae 80% o ynni goleuo'r DU yn cael ei ddefnyddio yn y gwaith.
- ▶ Os taw chi yw'r olaf i adael, sicrhewch eich bod yn diffodd popeth y tu ôl i chi, gan gynnwys peiriannau, argraffyddion, peiriannau diodydd, gwyntyllau, goleuadau ac ati.
- ▶ Paratowch gynllun teithio gwyrdd. Mae rhai cyflogwyr yn cynnig cymhellion ar gyfer ffyrdd o deithio sy'n defnyddio llai o ynni e.e. seiclo, cludiant cyhoeddus, rhannu car.
- ▶ Mae ailgylchu'n wych, ond mae lleihau gwastraff ac aildefnyddio deunyddiau hyd yn oed yn well. Argraffwch ar ddwy ochr y papur, aildefnyddiwch amlenni, a meddyliwch am ffyrdd i leihau gwastraff arall sy'n cael ei greu yn eich gweithle.
- ▶ Defnyddiwch llai o ddŵr yn y gwaith trwy gyhoeddusrwydd ac addasiadau syml i dapiau a thoiledau.
- ▶ Cydweithiwch i greu gweithle gwyrddach – siaradwch ag aelodau Prospect am ddod o hyd i atebion gyda'ch cyflogwr.

Sut i gymryd rhan

Mae nifer o gyfleoedd i aelodau Prospect gymryd rhan yn y gwaith hwn, yn dibynnu ar eich diddordebau a'r amser sbâr sydd gennych. Am ragor o wybodaeth cysylltwch â **Sue Ferns** (sue.ferns@prospect.org.uk) neu **Aveen McHugh** yn Adran Connect (aveen.mchugh@prospect.org.uk). Os nad ydych yn aelod Prospect yn barod, fe allwch ymaelodi: www.prospect.org.uk/joinus



green workplaces



*for a
better
future!*



environmental • economic • common sense

Prospect has been involved in green workplace initiatives across all sectors of the union. Our experience is that where employers and unions work together, organisations can save money, save energy and reduce waste. In some cases, it has led organisations to think about their wider corporate social responsibilities.

Improving environmental performance at work is key to tackling climate change. 30% of all UK greenhouse gas emissions are from businesses, compared with 26% from the residential sector and 24% from transport¹

What a waste²

Lighting an office overnight wastes enough energy to heat water for 1,000 cups of tea.

A typical window left open overnight in winter will waste enough energy to drive a small car over 35 miles.

A photocopier left on overnight uses enough energy to produce over 1,500 copies.

Leaving a PC monitor on all night wastes enough energy to microwave six dinners.

Using energy efficient light bulbs saves 80% of electricity.

Turning down a central heating thermostat by 1 degree achieves a 10% cost saving.

Why climate change is a union issue

With 6.5 million members in the UK, unions have an important role to play in raising awareness and advising on environmental management initiatives at work, at home and in the community.

To avoid the worst consequences of climate change and return to high quality growth, the UK must move to a low carbon economy. This will have implications for jobs and skills.



¹ Department of Energy and Climate Change, 2010 provisional figures by end use

² Carbon Trust and Met Office

It is already too late to avoid some of the consequences of climate change, but action can still be taken to help workplaces prepare for changes, such as hotter summers. There are clear overlaps with health and safety, where unions' roles are clearly established.

The worst and most immediate consequences of climate change are already evident in the developing world.

A two degree increase in temperature could:

- ▶ Bring increased weather variability, more frequent and intense extreme events and greater exposure to coastal storm surges
- ▶ Put between 100 million and 400 million more people at risk of hunger
- ▶ See 1-2 billion more people facing water shortages
- ▶ Lead to a permanent loss of 4-5% GDP (gross domestic product) in Africa and South Asia
- ▶ Put 20 to 30% of plant and animal species at increased risk of extinction.

What is Prospect doing?

Prospect surveys have consistently shown that members care about the environment and want the union to take action. We:

- ▶ develop green reps by organising national courses and branch-based training –
www.prospect.org.uk/education/index
- ▶ produce practical guidance and have set up an environment network – **www.prospect.org.uk/environment/index**
- ▶ work with employers to bring about environmental improvements in the workplace, for example with companies such as BT and United Utilities, government departments and national museums³
- ▶ work with organisations to embed sustainability into procurement practices, relationships with supply chains and corporate social responsibility –
www.prospect.org.uk/international/ethicalprocurement
- ▶ work with other unions and the TUC through the Trade Union Sustainable Development Advisory Committee (the main forum for consultation between government and trade unions on sustainable development and environmental issues).



Ten simple steps to a greener workplace

- ▶ Switch off all computer equipment, appliances and machinery when not in use.
- ▶ Take the stairs, not the lift.
- ▶ If your workplace is too hot, turn the heating down instead of opening a window. Work with union reps to address over-heating caused by equipment or poor ventilation.
- ▶ If it is too cold in winter, ensure radiators and heaters are not obstructed and ask your employer to install better insulation.
- ▶ Check if lighting is on unnecessarily in the middle of the day – 80% of the UK's lighting energy is used at work.
- ▶ If you are the last to leave, make sure that you turn everything off behind you, including machinery, printers, drinks machines, fans, lights etc.
- ▶ Set up a green travel plan. Some employers offer incentives for lower energy ways of travelling eg. cycling, public transport, car sharing.
- ▶ Apply the three Rs: recycling is great, but reducing waste and re-using materials is even better. Print on both sides of paper, re-use envelopes, and think about ways of reducing other waste that is generated in your workplace.
- ▶ Reduce water at work through publicity and simple adjustments to taps and toilets.
- ▶ Work together for a greener workplace – talk to Prospect members about working out solutions with your employer.

How to get involved

There are a range of opportunities for Prospect members to get involved in this work, depending on your interests and how much time you have available. For further information contact **Sue Ferns** (sue.ferns@prospect.org.uk) or **Aveen McHugh** in the Connect Sector (aveen.mchugh@prospect.org.uk). If you are not already a Prospect member, you can join at:

- ▶ www.prospect.org.uk/joinus/index or
- ▶ <http://connect.prospect.org.uk/join>

