

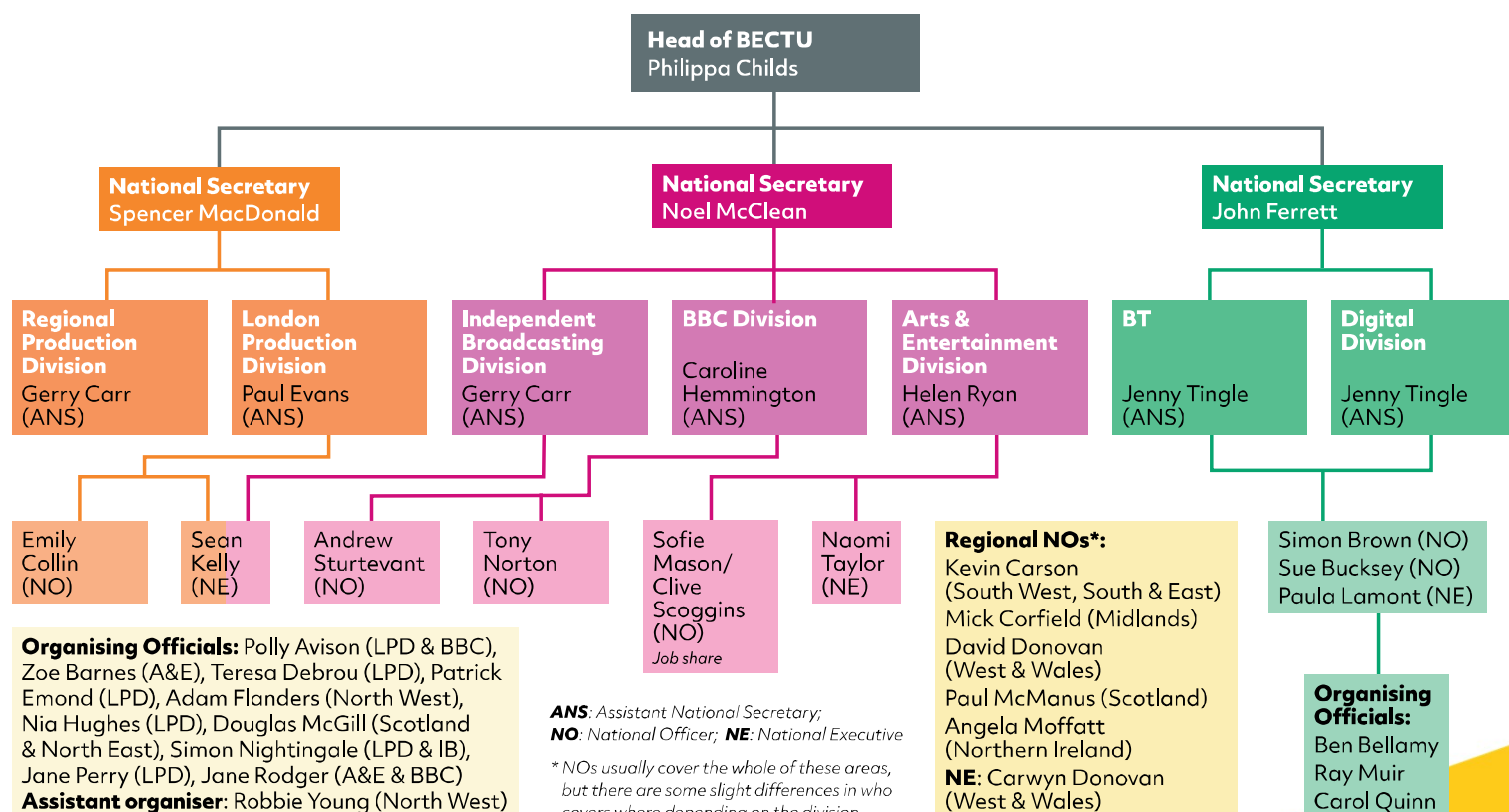


# Welcome to LPD

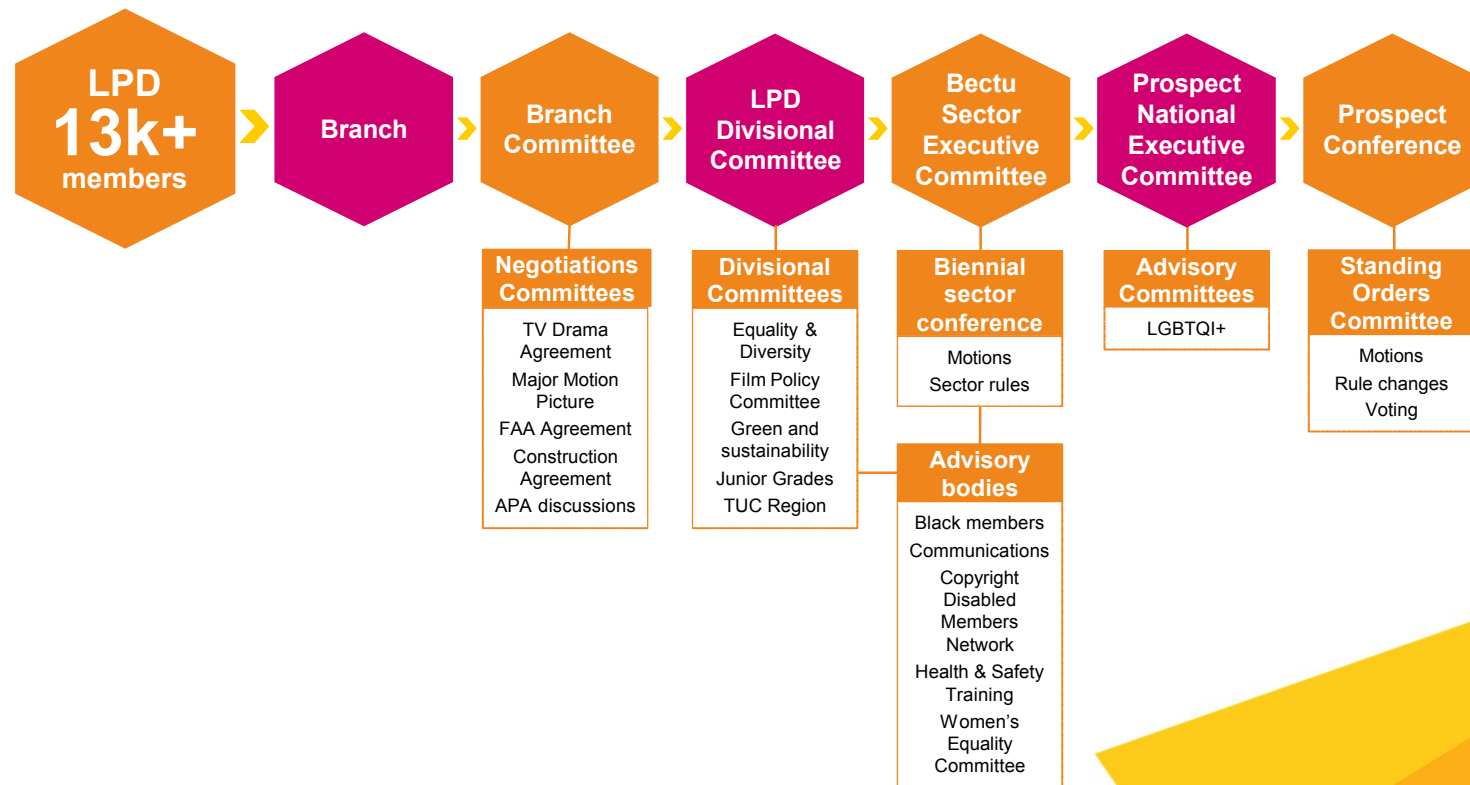
#wednesdayworkshops



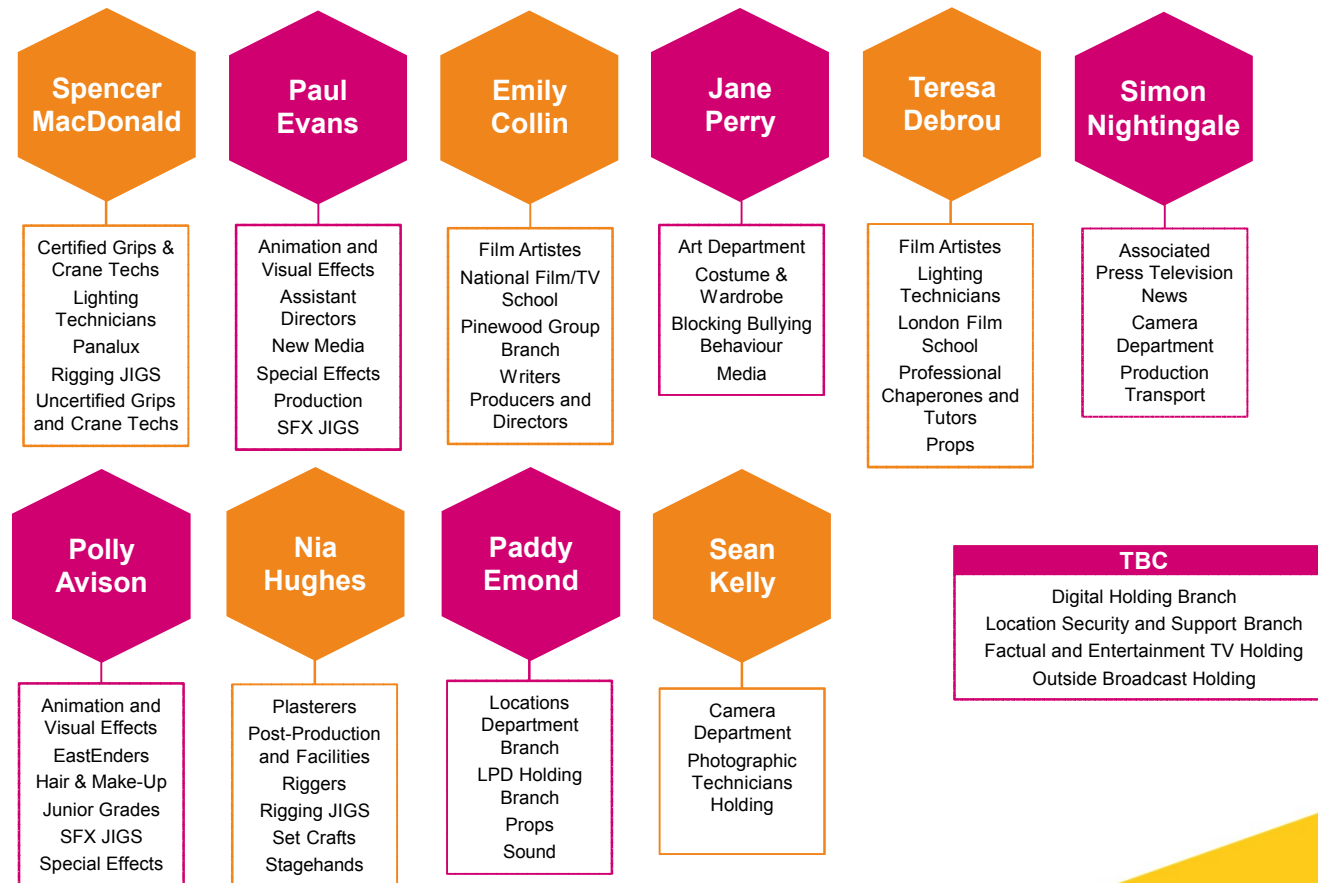
# Bectu staff structure



# How LPD works and its structure



# LPD branches and LPD staff



# Campaigns and agreements

Eyes Half Shut

A New Deal for  
Freelancers

Major Motion  
Picture  
Agreement

TV Drama  
Agreement

BBC Series &  
Serials

BBC  
Continuing  
Drama Series

Rates  
strategies,  
guidance and  
Ratecards

London  
Production  
Division

Furlough

Blocking  
Bullying  
Behaviour

Dignity At Work

Stand Up for  
Yourself –  
Stand Up for  
Each Other

Bafta & BFI  
Bullying Policy

Construction  
Agreement

Low Budget  
Action Plan

# Organising



# Training

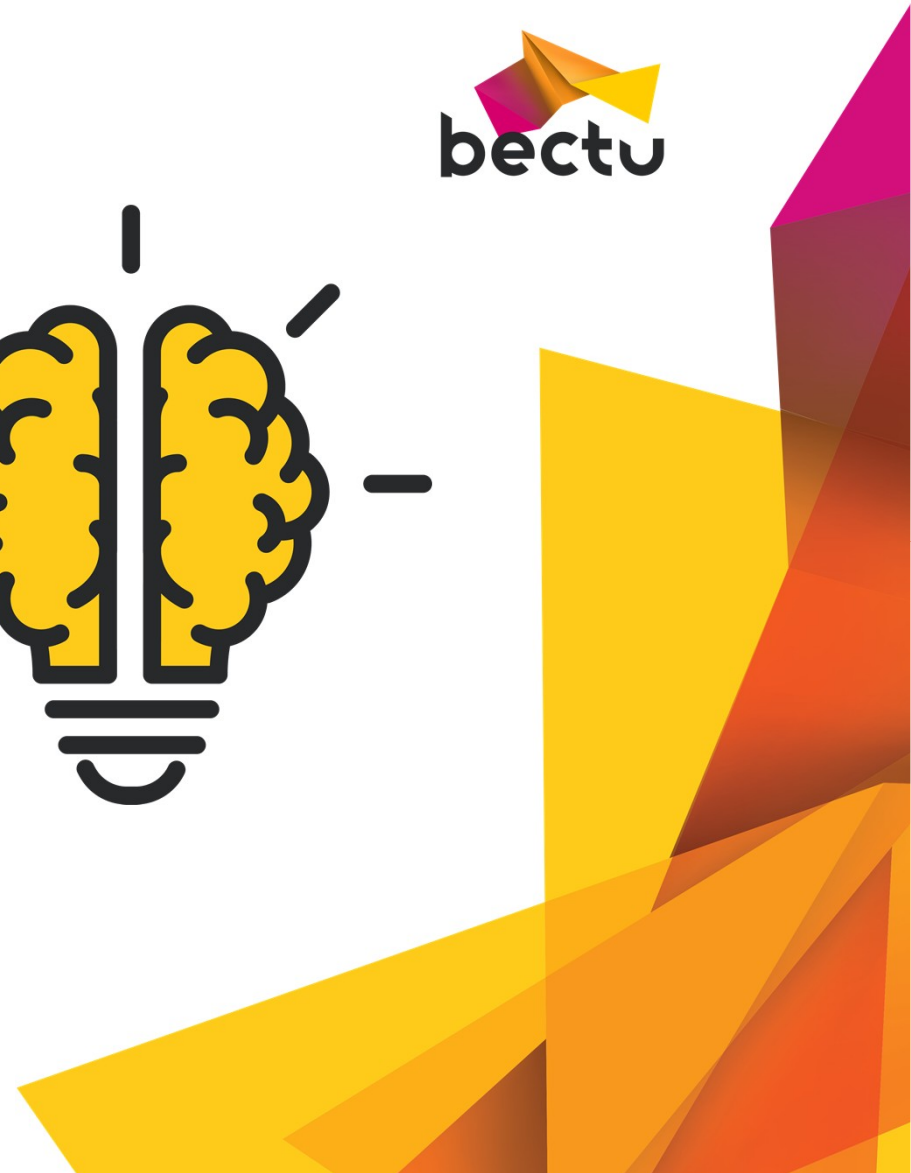
•Intro to  
training

•Bite Size  
training

•Reps  
courses

•Screen  
Skills

•Vocational



# Know the correct Bectu staff





# What case work do the LPD officials cover?

- Interpretation of Agreements
- Monies Owed Cases
- Bullying and Harassment
- Unfair dismissal
- Discrimination
- Unfair deduction of pay
- Harassment in the workplace
- Workplace grievances and disciplinary
- Informal advice
- Informal Dispute resolution
- Advise on Rates, Terms and Conditions
- Redundancies

# Perks of being a Bectu member

•Member led	•Negotiate Industry Agreements	•Pay your legal fees	•PLI Extra
•Personal Injury Lawyers	•Prospect Extra (Parliament Hill)	•Pensions	•Employment Law/Freelance advice
•Industry Stakeholders	•Industry Specific webinars	•Training	•Member only events